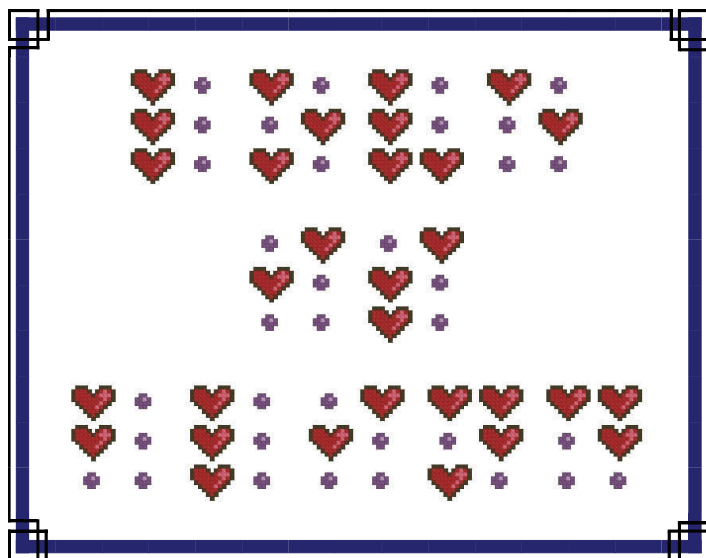




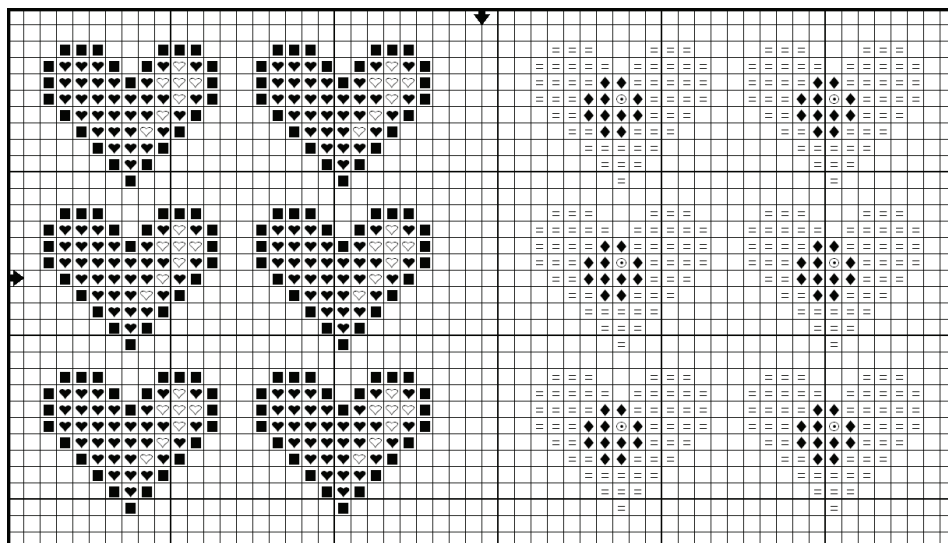
Ink Circles

Valentine's 2010



"Love is blind"

*** The = symbol is not a cross stitch. It is placeholder to show how the dots show up relative to the hearts. Keep the spacing consistent between letters as if all six parts were hearts. Use the two-letter template below to create your own message of love.



a	b	c	d	e	f	g	h	i	j	k
::	::	::	::	::	::	::	::	::	::	::
l	m	n	o	p	q	r	s	t	u	v
::	::	::	::	::	::	::	::	::	::	::
w	x	y	z							
::	::	::	::							

Fabric: Linen, 28 ct (over 2)
Stitch count: each letter is 24w X 29h
Size: 1 3/4" x 2", but you'll want spacing between letters, words and rows
Floss: 2 strands of DMC.

Floss Used for Full Stitches:

Symbol	Number	Color
♥	349	Coral-DK
◆	552	Violet-MD
⊙	554	Violet-LT
♡	893	Carnation-LT
■	938	Coffee Brown-UL DK
=	***	***

Copyright © 2010

Permission granted for shops to make photocopies for distribution to their customers.

This pattern is not to be sold, kitted, or reposted on the internet. Finished items may be used for personal use only.

Happy Stitching,
 Tracy Horner.