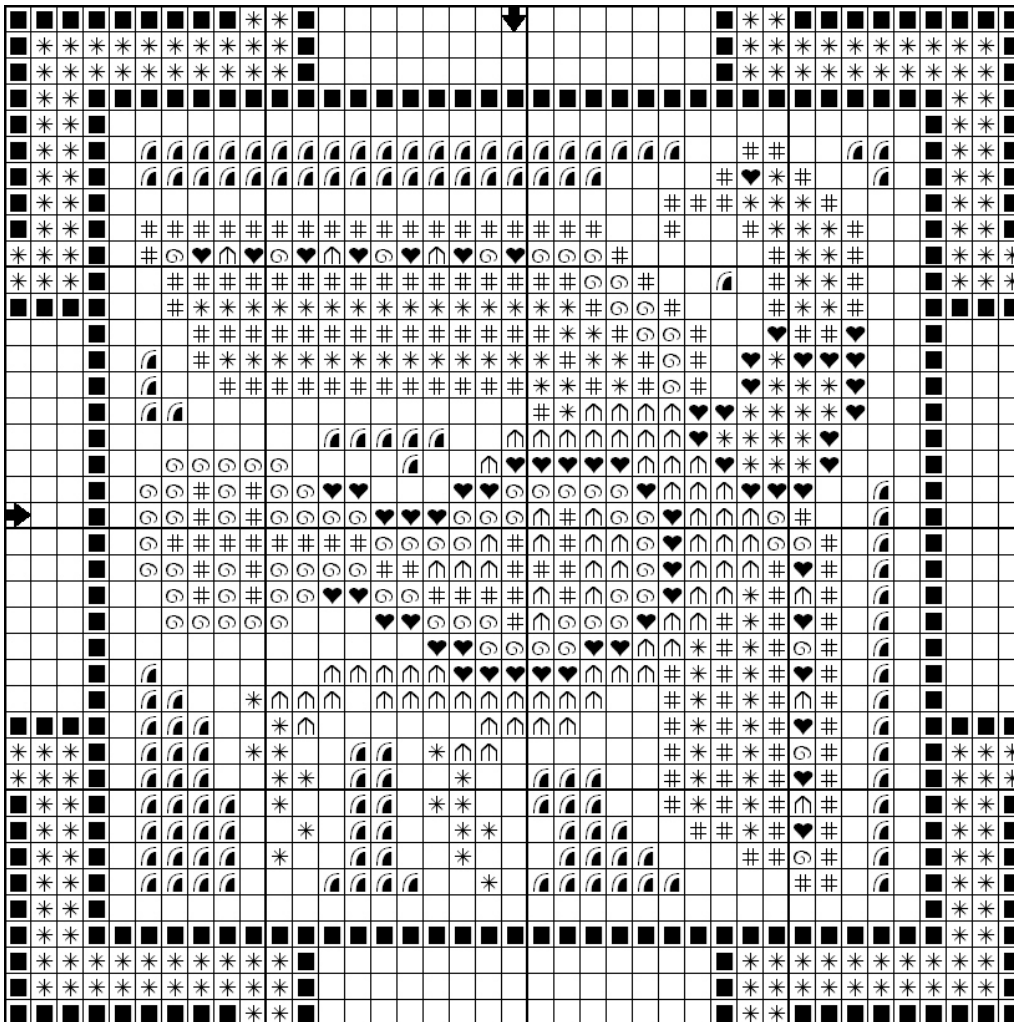
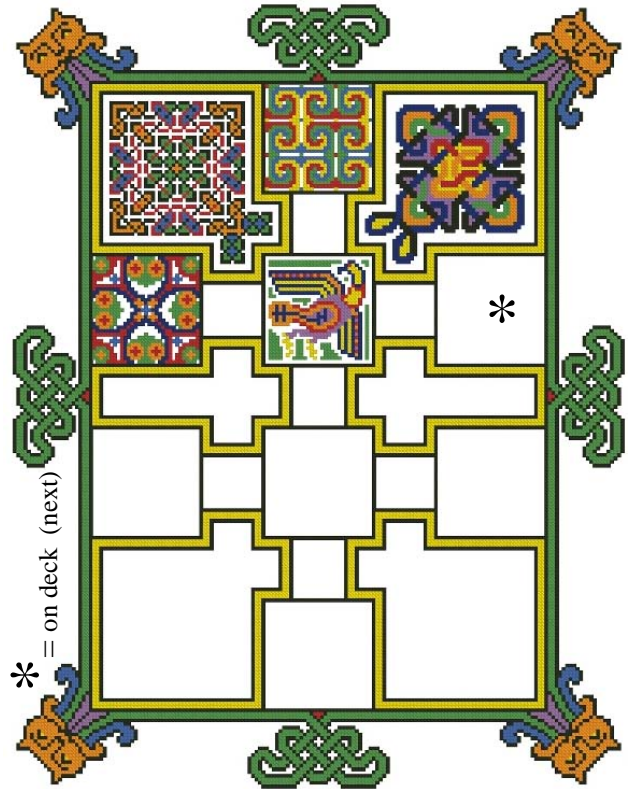


Ink Circles

Book of Ink Circles July 8, 2008



This is just a portion of the mystery. You need the symbol key and the placement frame to use this graph as part of that project.

You can, however, use this pattern stand-alone as a square for an ornament or needlecase.

See more patterns at www.inkcircles.com

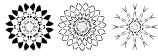
And

Download the other installments.

Copyright © 2008

Ink Circles maintains the rights to this pattern and may choose to redistribute it in another form in the future.

Happy Stitching,
Tracy



Ink Circles

Book of Ink Circles

Easy Eye chart for July 8, 2008

