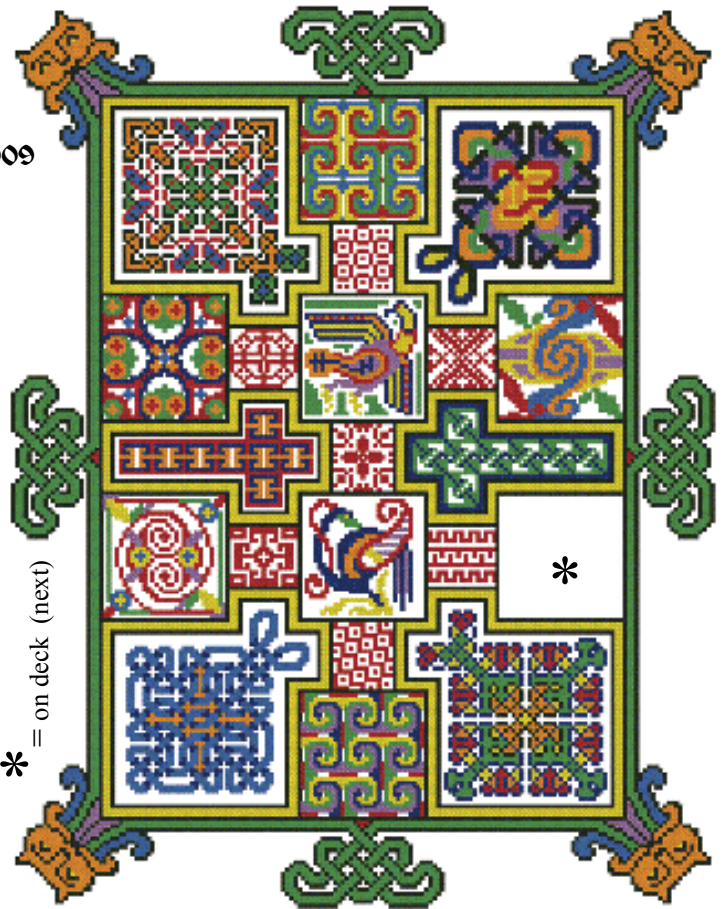
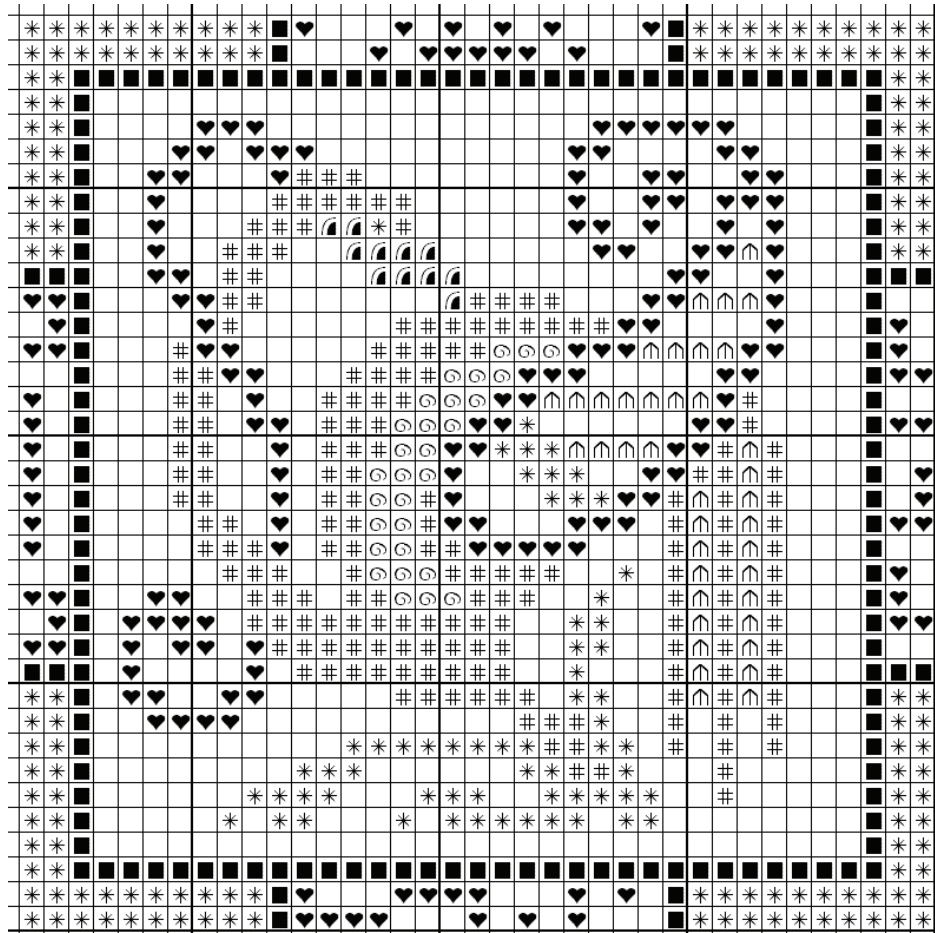


# Book of Ink Circles Feb. 3, 2009



\* = on deck (next)



This is just a portion of the mystery. You need the symbol key and the placement frame to use this graph as part of that project.

See more patterns at [www.inkcircles.com](http://www.inkcircles.com)

**And**

Download the other installments.

Copyright © 2008

Ink Circles maintains the rights to this pattern and may choose to redistribute it in another form in the future.

Happy Stitching,  
Tracy



# Ink Circles

## Book of Ink Circles

Easy Eye chart for February 3, 2009

